

Windows Vista and Java: How to remove an incompatible Java version on a Windows Vista computer, and install a compatible version for use with Blackboard 6.3 and 7.x products

To install a compatible version of the **Java plugin (J2SE 1.5.0_05)** on your Windows Vista computer:

Step 1: **Uninstall all previous versions of Java** on your computer.

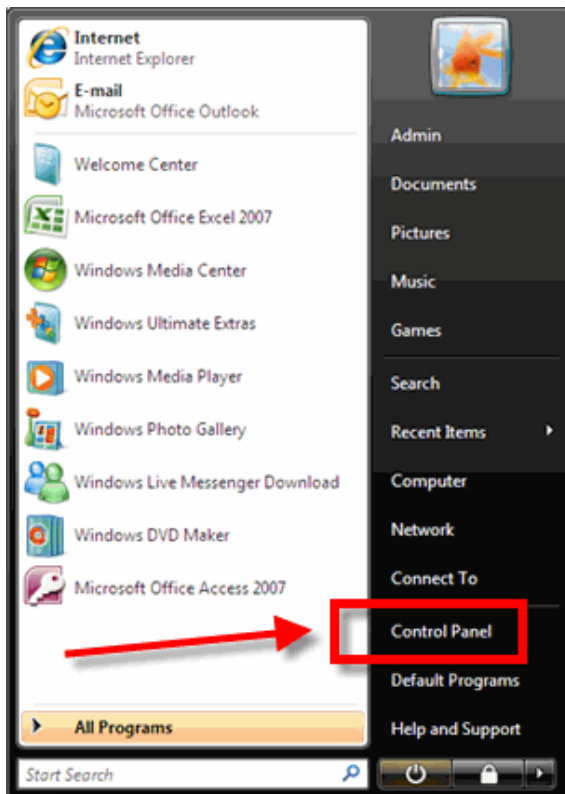
IMPORTANT: It is very important that you **do not install Java on top of other/previous versions of Java** or several key functions will not work. So, you must uninstall all Java versions prior to installing a version of Java that is compatible with the online course system.

- Close all applications.

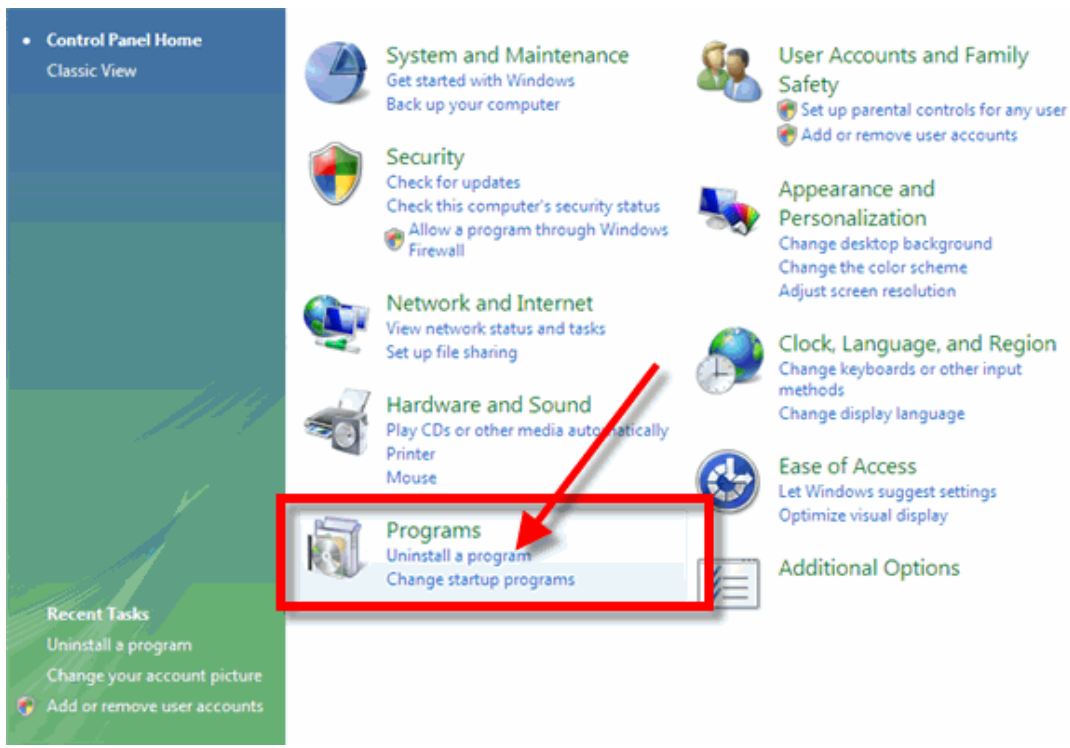


- Click the **Start** button

- Click **Control Panel**. For example:

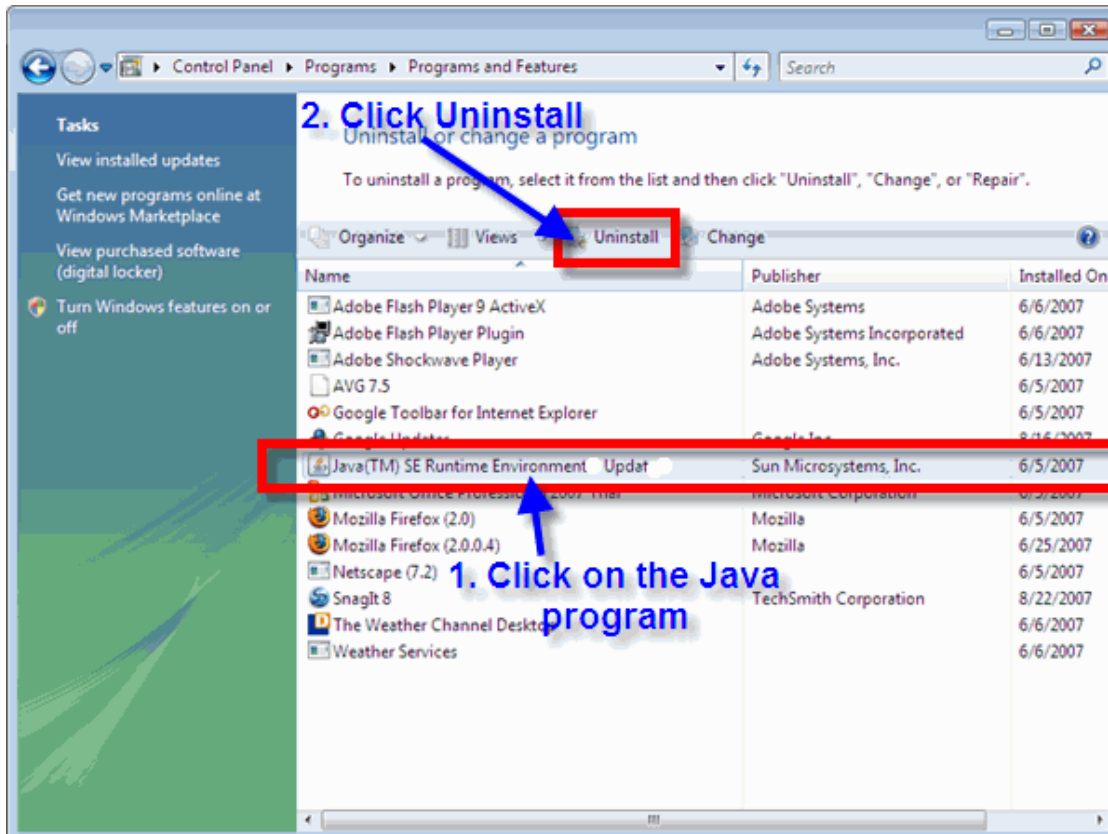


- Click the **Uninstall a program** link.



- Find all references to Java, JRE, and J2SE and remove each one.
 - Click on the **Java, JRE, or J2SE** program to highlight/select it.
 - Click the **Uninstall** button.

For example:

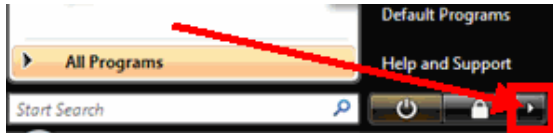


- If you are prompted to confirm the uninstall of Java, click **Yes**.
- Be patient as the uninstall process does its thing.

- If you get prompted to Cancel or Allow the process, click **Allow**.
- If you get prompted to restart your computer, click **Yes**.
- If you do NOT get prompted to restart your computer:
 - Wait for the uninstall process to complete.
 - Close the Control Panel.
 - Restart your computer:



- Click the **Start** button .
- Click the **right arrow**.



- Click **Restart**.

- If you have another Java version in your program list, repeat the above steps to uninstall that version.

Step 2: **Get Java.**

[Click here to download a Java version compatible with the online course system.](#) (Java 1.5.0_05)

At the Sun Downloads site:

- Click **Accept License Agreement:**

Download Center - Download - Microsoft Internet Explorer

File Edit View Favorites Tools Help

Address <https://sdkc2e.sun.com/ECom/EComActionServlet;jsessionid=8CC84D854A3CC6645287D71F6F1A639B>

Sun Downloads

Download

J2SE(TM) Runtime Environment 5.0 Update 5

For easier, more reliable downloads, try Sun Download Manager.

- Solaris 64-bit requires users to first install 32-bit.
- Information on **picking the right format to download**
- Installation instructions:
 - English
 - Japanese
- For Windows, choose "Windows Online Installation" for the quickest download and installation on a machine connected to the Internet. Typical download size is **7.1 MB**, which is the minimum download. The size may increase if additional features are selected.

NOTE: The list offers files for different platforms - please be sure to select the proper file(s) for your platform. Carefully review the files listed below to select the ones you want, then click the link(s) to download. If you don't complete your download, you may return to the Download Center anytime, sign in, then click the "Download/Order History" link on the left to continue. For any download problems or questions, please see the [Download Center FAQ](#). How long will the download take? [\[?\]](#)

Required: You must accept the license agreement to download the product.

Accept License Agreement | [Review License Agreement](#)

Decline License Agreement

Windows Platform - J2SE(TM) Runtime Environment 5.0 Update 5		
Windows Offline Installation, Multi-language	jre-1_5_0_05-windows-i586-p.exe	15.67 MB
Windows Online Installation, Multi-language	jre-1_5_0_05-windows-i586-p-iftw.exe	237.80 KB

- Click **Windows Offline Installation, Multi-language**. For example:

Sun Downloads

Download

J2SE(TM) Runtime Environment 5.0 Update 5

For easier, more reliable downloads, try Sun Download Manager.

- Solaris 64-bit requires users to first install 32-bit.
- Information on **picking the right format to download**
- Installation instructions:
 - English
 - Japanese
- For Windows, choose "Windows Online Installation" for the quickest download and installation on a machine connected to the Internet. Typical download size is **7.1 MB**, which is the minimum download. The size may increase if additional features are selected.

NOTE: The list offers files for different platforms - please be sure to select the proper file(s) for your platform. Carefully review the files listed below to select the ones you want, then click the link(s) to download. If you don't complete your download, you may return to the Download Center anytime, sign in, then click the "Download/Order History" link on the left to continue. For any download problems or questions, please see the [Download Center FAQ](#). How long will the download take? [\[?\]](#)

Windows Platform - J2SE(TM) Runtime Environment 5.0 Update 5		
Windows Offline Installation, Multi-language	jre-1_5_0_05-windows-i586-p.exe	15.67 MB
Windows Online Installation, Multi-language	jre-1_5_0_05-windows-i586-p-iftw.exe	237.80 KB

Linux Platform - J2SE(TM) Runtime Environment 5.0 Update 5		
Linux RPM in self-extracting file	jre-1_5_0_05-linux-i586-rpm.bin	15.35 MB

- In the File Download window, click the **Run** button.

J2SE(TM) Runtime Environment 5.0 Update 5
For easier, more reliable downloads, try Sun Download Manager.

- Solaris 64-bit requires users to first install 32-bit.
- Information on **picking the right format to download**
- Installation instructions:
 - English
 - Japanese
- For Windows, choose "Windows Online Installation" for the quickest download and installation on a machine connected to the Internet. For more information, see [Windows Online Installation](#).
- Increase if additional features are required.

NOTE: The list offers files for download. Carefully review the files list before you complete your download, you may want to use the "History" link on the left to complete your download. For any download problems, see [How long will the download take?](#)

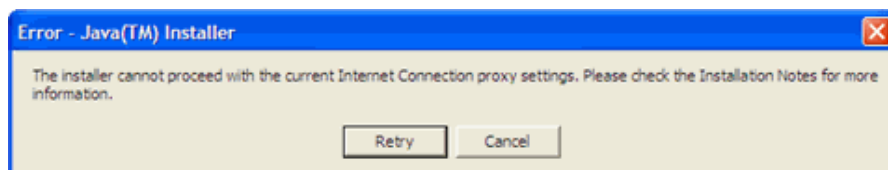
Windows Platform - J2SE(TM) Runtime Environment 5.0 Update 5		
Windows Offline Installation, Multi-language		15.67 MB
Windows Online Installation, Multi-language	jre-1_5_0_05-windows-i586-p-rtw.exe	237.80 KB
Linux Platform - J2SE(TM) Runtime Environment 5.0 Update 5		
Linux RPM in self-extracting file	jre-1_5_0_05-linux-i586-rpm.bin	15.35 MB

The program will begin downloading, and there will be a green progress bar. Be Patient!

- When prompted for your permission to trust this program, click **Continue**.

NOTES:

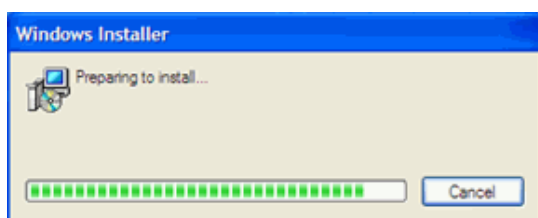
- If you get the message: "The Installer cannot proceed with the current Internet Connection proxy settings. Please check the Installation Notes for more information":



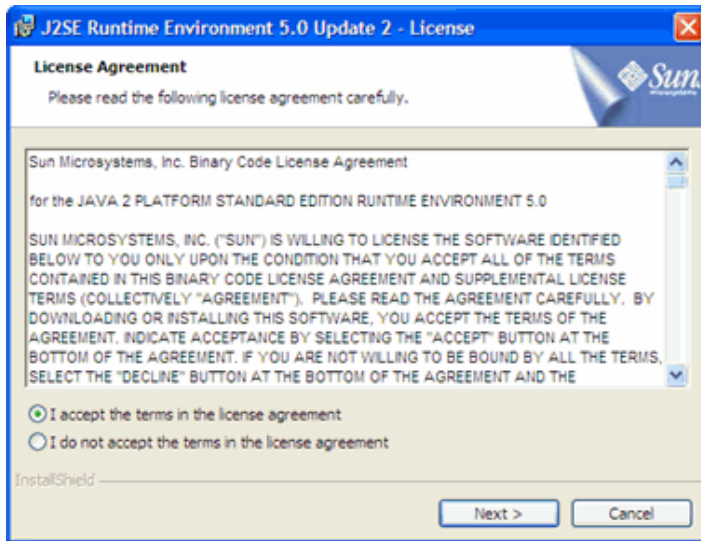
It is best to Cancel, close all applications, and restart your computer. Once your computer has started up again, log back into your course and repeat the above steps to install the Java plug-in.

- If the installation stalls at any point, you may have a firewall program blocking the installation. In these cases, you can "trust" the Java program.

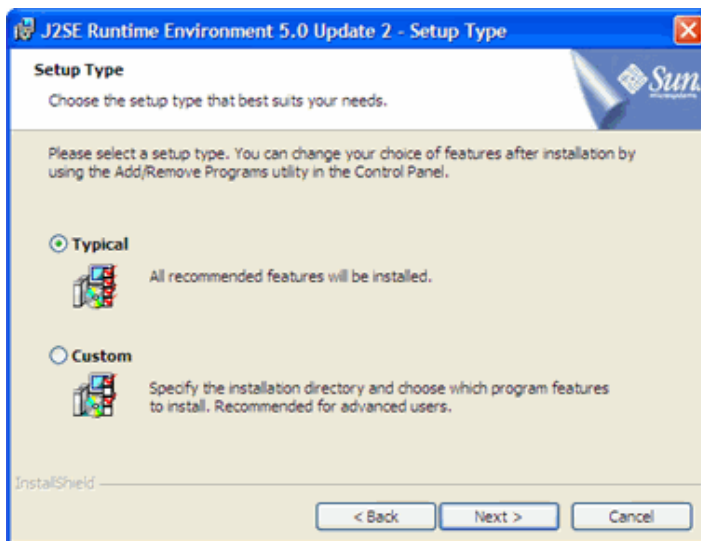
Step 3: The Windows Installer will say "**Preparing to install. . .**" Be patient.



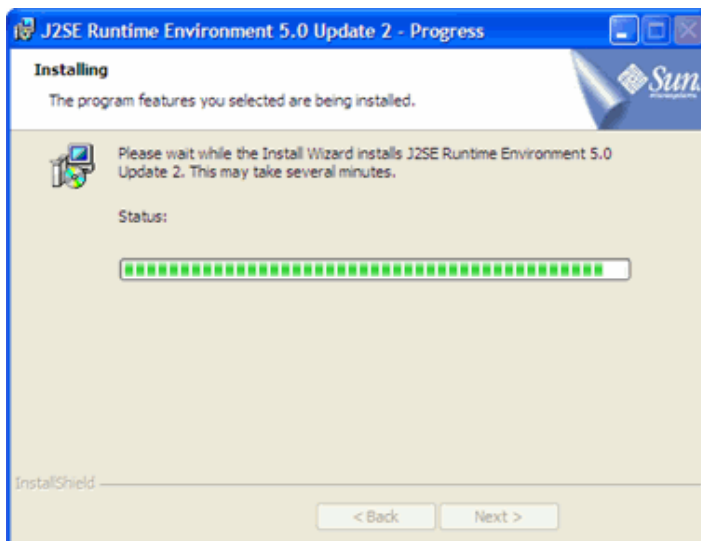
Step 4: On the J2SE Runtime Environment License Agreement, select **I accept the terms in the license agreement** and click **Next >**.



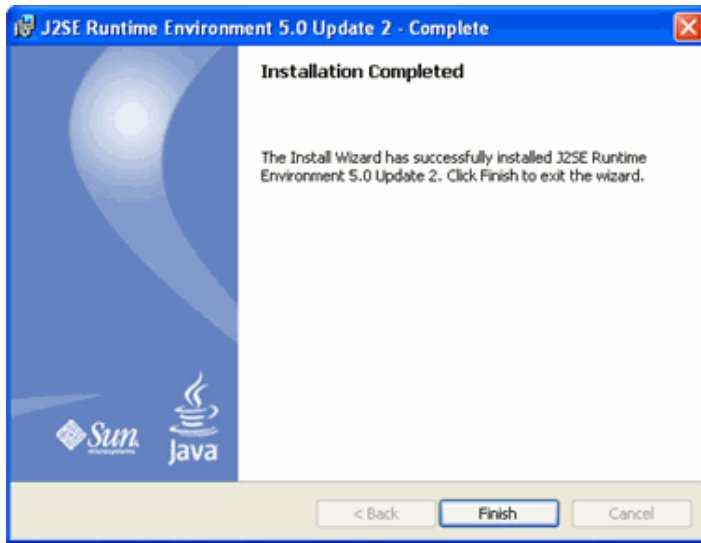
Step 5: On the Setup Type, click the **Next >** button again.



Step 6: Java will begin installing. You will see a few Progress windows. **Be patient for this process to complete.**



Step 7: Once the Installation has completed, click the **Finish** button.



Good News! The compatible Java plug-in is now installed! As confirmation, you will see a steaming coffee cup image in the lower-right of your computer's task bar whenever you open an application that uses Java.



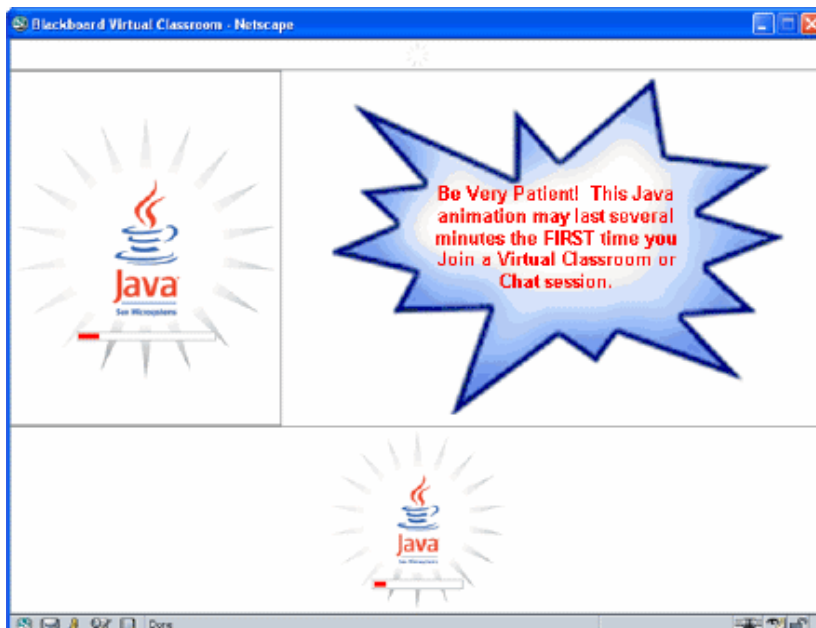
Step 8: **Login to your course.**

Step 9: In your course, go to a **tool that requires Java.**

For example, the **Virtual Classroom** is a real-time collaboration tool that is dependent on the Java plugin on your computer. In your course, click the **Communication** link (Tools box), **Collaboration** link, and the **Join** button to the right of Virtual Classroom.

After installing Java, the first time you open a Java-enabled tool, a coffee cup animation flashes as Java loads. This will only happen once, but the process may take a few minutes. **Be patient.**

In the Virtual Classroom for example:



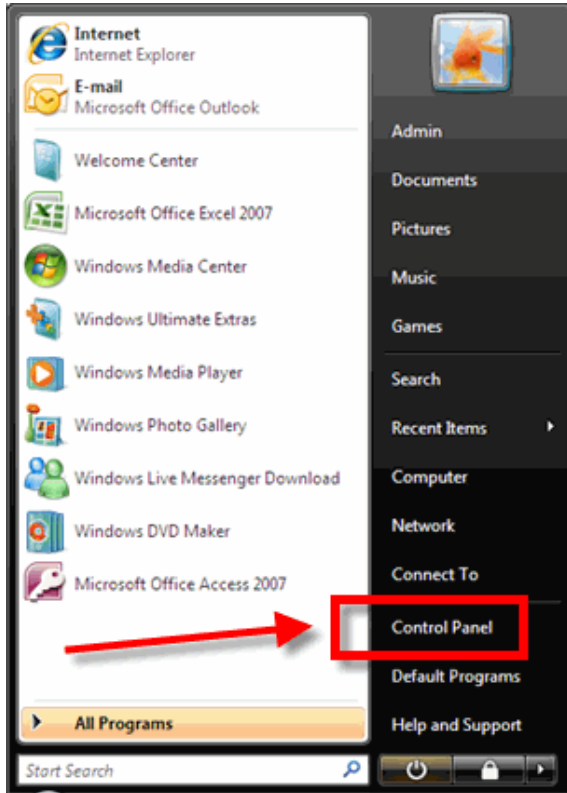
Again, be patient. Once the tool, in this case the Virtual Classroom, loads for the first time, this and other Java-enabled tools will run fairly quickly (over a high-speed connection).

NOTES:

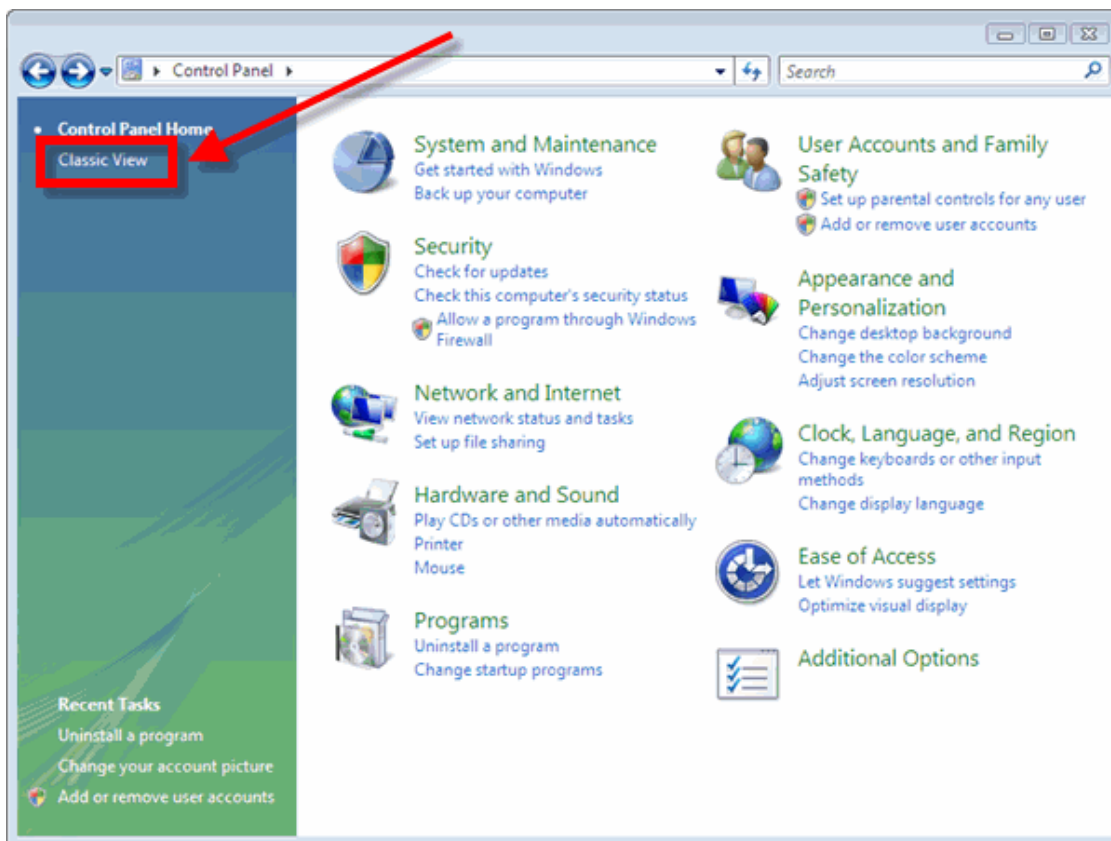
- If the Java-enabled tool will still not open, close the browser and log back into your course. Or simply restart your computer as Java typically works best after a restart.
- After installing Java and restarting your computer, do not download updates for the Java, JRE, or J2SE. **Disable automatic checking for Java updates:**

- Click the **Start** button  and then click **Control Panel**.

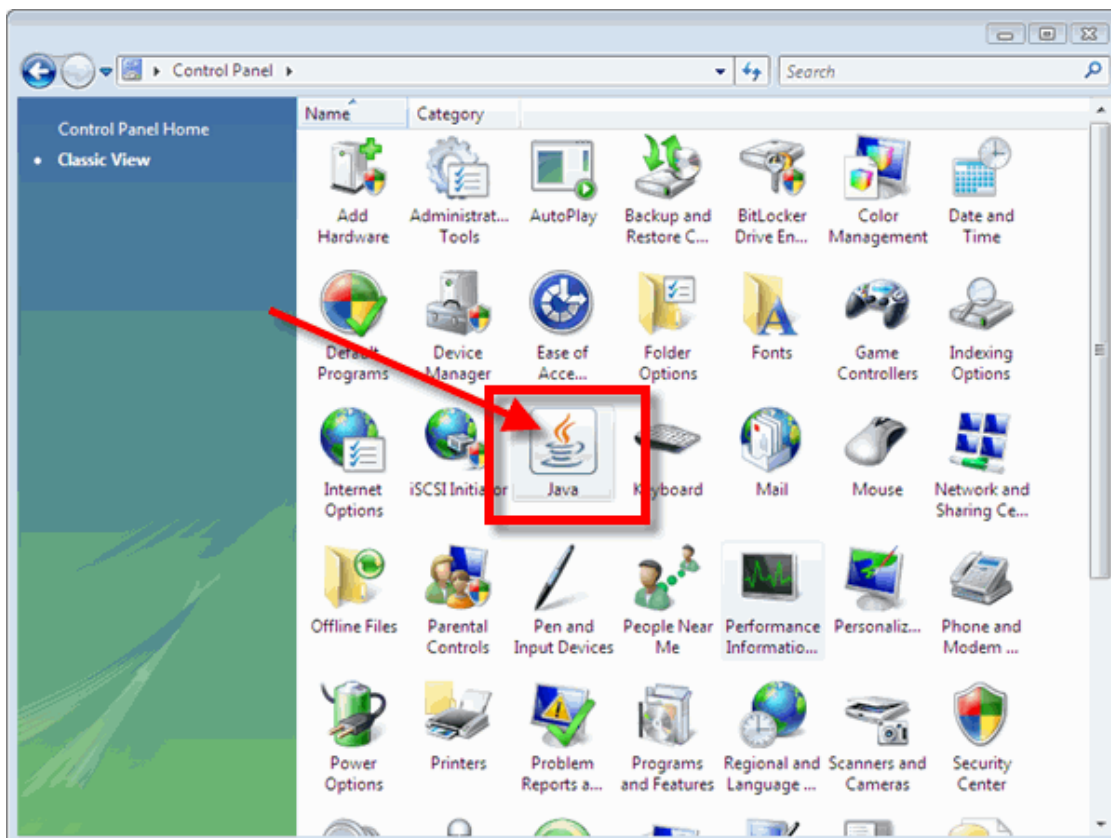
For example:



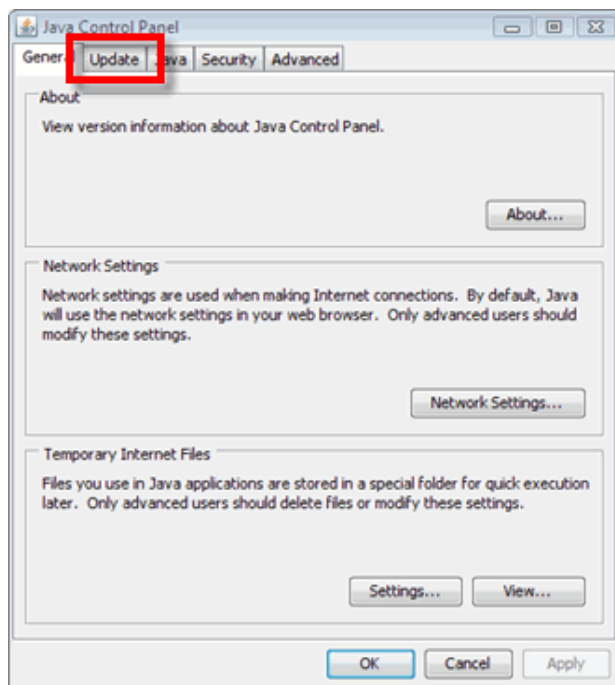
- Click **Classic View**.



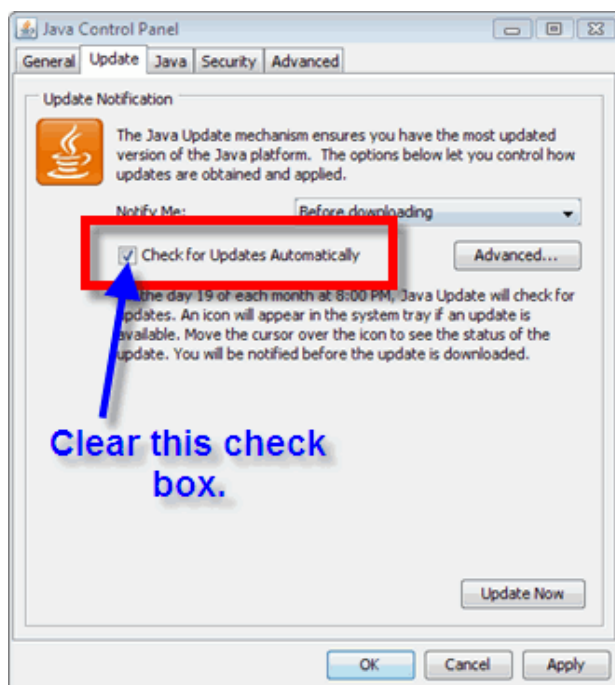
- o Double-click the **Java** image.



- o In the Java Control Panel, click the **Update** tab.



- Clear the checkbox next to **Check for Updates Automatically**.



- If you get a Java Update - Warning message, click the **Never Check** button.
- Click the **Apply** button.
- Click the "x" to close the Java Control Panel window.
- The installation of Java only affects the current computer you are working on. If you use a different computer (desktop or notebook), you may not have any problems at all with Java or you may have to go through this process all over again.

If you have any further questions, please contact us for support. Thank you.

- Technical Support